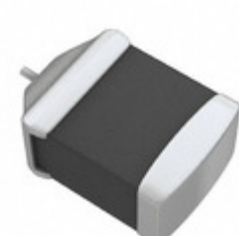


## 195D106X9050R2T



**Part Number:** [195D106X9050R2T](#)  
**Manufacturer:** [Electro-Films \(EFI\) / Vishay](#)  
**Description:** CAP TANT 10UF 50V 10% 2824  
**Data sheet:** [195D Series Datasheet](#)

**RoHS Status:** Lead free / RoHS Compliant  
**Ship From:** Hong Kong  
**Shipment Way:** DHL/Fedex/TNT/UPS/EMS

Images are for reference only.  
 See Product Specifications for product details.  
 Buy 195D106X9050R2T with confidence from  
 Component-World.HK, 1 Year Warranty

[Request For Quotation](#)

### PRODUCT PARAMETER

|   |  |   |  |
|---|--|---|--|
| <b>Part Number</b>                      | 195D106X9050R2T  | <b>Manufacturer</b>                       | <a href="#">Electro-Films (EFI) / Vishay</a> |
| <b>Description</b>                      | CAP TANT 10UF 50V 10% 2824                                       | <b>Lead Free Status / RoHS Status</b>     | Lead free / RoHS Compliant                   |
| <b>Quantity Available</b>               | 16352 pcs  | <b>Data sheet</b>                         | <a href="#">195D Series Datasheet</a>        |
| <b>Category</b>                         | <a href="#">Capacitors</a>                                       | <b>Voltage - Rated</b>                    | 50V  |
| <b>Type</b>                             | Conformal Coated   | <b>Tolerance</b>                          | ±10%   |
| <b>Size / Dimension</b>                 | 0.283" L x 0.236" W (7.20mm x 6.00mm)                            | <b>Series</b>                             | TANTAMOUNT®, 195D                            |
| <b>Packaging</b>                        | Tape & Reel (TR)   | <b>Package / Case</b>                     | 2824 (7260 Metric)                           |
| <b>Operating Temperature</b>            | -55°C ~ 125°C  | <b>Mounting Type</b>                      | Surface Mount                                |
| <b>Moisture Sensitivity Level (MSL)</b> | 2A (4 Weeks)   | <b>Manufacturer Standard Lead Time</b>    | 15 Weeks                                     |
| <b>Manufacturer Size Code</b>           | R  | <b>Lifetime @ Temp.</b>                   | -  |
| <b>Lead Spacing</b>                     | -  | <b>Lead Free Status / RoHS Status</b>     | Lead free / RoHS Compliant                   |
| <b>Height - Seated (Max)</b>            | 0.150" (3.80mm)  | <b>Features</b>                           | General Purpose                              |
| <b>Failure Rate</b>                     | -  | <b>ESR (Equivalent Series Resistance)</b> | -  |
| <b>Detailed Description</b>             | 10µF Conformal Coated Tantalum Capacitors 50V 2824 (7260 Metric) | <b>Capacitance</b>                        | 10µF   |

Component-World.com is a Reliable Stocking Distributor of Electronic Components. We specialize in all Electro-Films (EFI) / Vishay series electronic components. We have 16352 pieces of Electro-Films (EFI) / Vishay 195D106X9050R2T in stock available now. Request a quote from electronics components distributor at Component-World.com, our sales team will contact you within 24 hours.  
 RFQ Email: [info@Components-World.com](mailto:info@Components-World.com)

### RELATED PRODUCTS

|  |   |  |                     |
|--|---|--|---------------------|
|  | <b>Part#:</b> <a href="#">195D106X9025Y2W</a><br><b>Description:</b> CAP TANT 10UF 25V 10% 2910   | <b>Manufacturers:</b> <a href="#">Electro-Films (EFI) / Vishay</a> | <a href="#">RFQ</a> |
|  | <b>Part#:</b> <a href="#">195D107X9010H2T</a><br><b>Description:</b> CAP TANT 100UF 10V 10% 3115  | <b>Manufacturers:</b> <a href="#">Electro-Films (EFI) / Vishay</a> | <a href="#">RFQ</a> |
|  | <b>Part#:</b> <a href="#">195D106X9025G2T</a><br><b>Description:</b> CAP TANT 10UF 25V 10% 2810   | <b>Manufacturers:</b> <a href="#">Electro-Films (EFI) / Vishay</a> | <a href="#">RFQ</a> |
|  | <b>Part#:</b> <a href="#">195D106X96R3V2T</a><br><b>Description:</b> CAP TANT 10UF 6.3V 10% 1410  | <b>Manufacturers:</b> <a href="#">Electro-Films (EFI) / Vishay</a> | <a href="#">RFQ</a> |
|  | <b>Part#:</b> <a href="#">195D106X9025Y4T</a><br><b>Description:</b> CAP TANT 10UF 25V 10% 2910   | <b>Manufacturers:</b> <a href="#">Electro-Films (EFI) / Vishay</a> | <a href="#">RFQ</a> |
|  | <b>Part#:</b> <a href="#">195D106X96R3V8T</a><br><b>Description:</b> CAP TANT 10UF 6.3V 10% 1410  | <b>Manufacturers:</b> <a href="#">Electro-Films (EFI) / Vishay</a> | <a href="#">RFQ</a> |
|  | <b>Part#:</b> <a href="#">195D106X9025Y8T</a><br><b>Description:</b> CAP TANT 10UF 25V 10% 2910   | <b>Manufacturers:</b> <a href="#">Electro-Films (EFI) / Vishay</a> | <a href="#">RFQ</a> |
|  | <b>Part#:</b> <a href="#">195D107X9010R2T</a><br><b>Description:</b> CAP TANT 100UF 10V 10% 2824  | <b>Manufacturers:</b> <a href="#">Electro-Films (EFI) / Vishay</a> | <a href="#">RFQ</a> |
|  | <b>Part#:</b> <a href="#">195D107X0004Z2T</a><br><b>Description:</b> CAP TANT 100UF 4V 20% 2910   | <b>Manufacturers:</b> <a href="#">Electro-Films (EFI) / Vishay</a> | <a href="#">RFQ</a> |
|  | <b>Part#:</b> <a href="#">195D106X9025Y2T</a><br><b>Description:</b> CAP TANT 10UF 25V 10% 2910   | <b>Manufacturers:</b> <a href="#">Electro-Films (EFI) / Vishay</a> | <a href="#">RFQ</a> |
|  | <b>Part#:</b> <a href="#">195D106X9035Z2T</a><br><b>Description:</b> CAP TANT 10UF 35V 10% 2910   | <b>Manufacturers:</b> <a href="#">Electro-Films (EFI) / Vishay</a> | <a href="#">RFQ</a> |
|  | <b>Part#:</b> <a href="#">195D106X9025Y2B</a><br><b>Description:</b> CAP TANT 10UF 25V 10% 2910   | <b>Manufacturers:</b> <a href="#">Electro-Films (EFI) / Vishay</a> | <a href="#">RFQ</a> |
|  | <b>Part#:</b> <a href="#">195D106X9016X4T</a><br><b>Description:</b> CAP TANT 10UF 16V 10% 2910   | <b>Manufacturers:</b> <a href="#">Electro-Films (EFI) / Vishay</a> | <a href="#">RFQ</a> |
|  | <b>Part#:</b> <a href="#">195D106X9035Z8T</a><br><b>Description:</b> CAP TANT 10UF 35V 10% 2910   | <b>Manufacturers:</b> <a href="#">Electro-Films (EFI) / Vishay</a> | <a href="#">RFQ</a> |
|  | <b>Part#:</b> <a href="#">195D107X96R3X2T</a><br><b>Description:</b> CAP TANT 100UF 6.3V 10% 2910 | <b>Manufacturers:</b> <a href="#">Electro-Films (EFI) / Vishay</a> | <a href="#">RFQ</a> |
|  | <b>Part#:</b> <a href="#">195D107X0010R2T</a><br><b>Description:</b> CAP TANT 100UF 10V 20% 2824  | <b>Manufacturers:</b> <a href="#">Electro-Films (EFI) / Vishay</a> | <a href="#">RFQ</a> |
|  | <b>Part#:</b> <a href="#">195D106X9050R8T</a><br><b>Description:</b> CAP TANT 10UF 50V 10% 2824   | <b>Manufacturers:</b> <a href="#">Electro-Films (EFI) / Vishay</a> | <a href="#">RFQ</a> |
|  | <b>Part#:</b> <a href="#">195D106X9020Y2T</a><br><b>Description:</b> CAP TANT 10UF 20V 10% 2910   | <b>Manufacturers:</b> <a href="#">Electro-Films (EFI) / Vishay</a> | <a href="#">RFQ</a> |
|  | <b>Part#:</b> <a href="#">195D107X06R3Z2T</a><br><b>Description:</b> CAP TANT 100UF 6.3V 20% 2910 | <b>Manufacturers:</b> <a href="#">Electro-Films (EFI) / Vishay</a> | <a href="#">RFQ</a> |
|  | <b>Part#:</b> <a href="#">195D107X9004Z2T</a><br><b>Description:</b> CAP TANT 100UF 4V 10% 2910   | <b>Manufacturers:</b> <a href="#">Electro-Films (EFI) / Vishay</a> | <a href="#">RFQ</a> |

### Related keywords for 195D106X9050R2T

|  |  |  |   |
|--|--|--|---|
| <a href="#">Electro-Films (EFI) / Vishay 195D106X9050R2T</a> | <a href="#">195D106X9050R2T distributor</a>                  | <a href="#">195D106X9050R2T supplier</a>             | <a href="#">195D106X9050R2T price</a>                               |
| <a href="#">195D106X9050R2T download datasheet</a>           | <a href="#">195D106X9050R2T datasheet</a>                    | <a href="#">195D106X9050R2T stock</a>                | <a href="#">buy 195D106X9050R2T</a>                                 |
| <a href="#">Electro-Films (EFI) / Vishay 195D106X9050R2T</a> | <a href="#">Electro-Films (EFI) / Vishay 195D106X9050R2T</a> | <a href="#">Vishay Electro-Films 195D106X9050R2T</a> | <a href="#">Phoenix Passive Components / Vishay 195D106X9050R2T</a> |